

Château Canon La Gaffelière 1998

Revue de presse
Press review

Vignobles Comtes von Neipperg

Frankreich

Nach jüngsten Schätzungen des französischen Landwirtschaftsministeriums liegt die Erntemenge bei ungefähr 52 Millionen Hektoliter. Dies entspricht einer Einbuße von rund 6 Prozent im Vergleich zum vergangenen Jahr.

Peter Balzerowiak, Verkaufsleiter beim renommierten Importeur WeinArt im Rheingau, rechnet mit einem guten Ergebnis für **Saint-Emilion** und **Pomerol**: »Die Winzer haben ihre Merlot- und Cabernet-Sauvignon-Trauben in diesen Gebieten rechtzeitig vorm großen Regen geerntet. Im **Médoc** blieben die Trauben hingegen zu lange hängen. Das Resultat dürfte hier weniger gut ausfallen.«

Für *Stephan Graf Neipperg* von Château Canon-la-Gaffelière in Saint-Emilion ist der 98er »der größte Jahrgang seit 1990. Der heiße Sommer brachte sehr reife Trauben, der Regen konnte ihnen letztendlich nichts mehr anhaben, da die Vegetation abgeschlossen war. Bei einem durchschnittlichen Ertrag von 32 Hektoliter pro Hektar bringt uns der neue Jahrgang sehr dichte, volle und komplexe Weine mit einer sehr intensiven Farbe und reifen, vollen Tanninen. Der 98er wird einfach ein Super-Wein.«

ALLES ÜBER WEIN Nr. 6-1998.jpg

PREIS-LEISTUNGS-VERHÄLTNIS

SPITZENWEINE ZU GUTEN PREISEN

■ Die 14 Weine mit einem **sehr guten Preis-Leistungs-Verhältnis**, nach der Rangliste geordnet, sind folgende:

- Haut-Condissas
- Beauregard
- Grand Mayne
- Berliquet
- Clos de l'Oratoire
- Monbousquet
- La Tour Figeac
- Pavie-Decesse
- Domaine de Chevalier
- Pichon-Longue-

- ville Baron
- Smith Haut-Lafitte
- Clos Fourtet
- Canon-la-Gaffelière
- Poujeaux

■ Die 19 Weine mit **gutem Preis-Leistungs-Verhältnis**, nach der Rangliste geordnet, heißen:

- Rollan de By
- Le Bon Pasteur
- Pavie-Macquin
- Lagrange

- Phélan Ségur
- du Tertre
- Camensac
- Marquis de Terme
- Haut-Marbuzet
- Pavie
- Larrivet-Haut-Brion
- Talbot
- Léoville Poyferré
- Citran
- Pape Clément
- Branaire-Ducru
- Langoa-Barton
- Canon
- Haut-Bailly

FALSTAFF MÄRZ/APRIL 2·2004

FALSTAFF 1 - 2.2004.jpg

CHATEAU CANON
LA GAFFELIÈRE 1998

55% Merlot, 40% Cabernet Franc,
5% Cabernet Sauvignon.

Stéphan Von Neipperg est homme de mesure: fier des Merlot de la Mondotte mais pas aux prix de dévaloriser les Cabernet Franc de Canon La Gaffelière. Car enfin, si La Mondotte est un luxe qu'il a pu offrir aux vignobles Neipperg, la restauration du vignoble de Canon La Gaffelière a été une tout autre affaire: comprendre son terroir en profondeur, au propre et au figuré, et lui redonner vie lui ont demandé force et conviction. Force de changer le quotidien et conviction de ne pas faire cela inutilement. Mais l'homme a l'esprit fin et l'intelligence aiguisée. Il a fait de Canon La Gaffelière un des vins les plus puissants et massifs de Saint-Emilion. Si puissant que son vin passe médiatiquement moins "Saint-Emilion" que tant de vins qui "merlotte".

Mais La Mondotte.... ?

Nez à peine ouvert, laissant transparaître un fruit de belle maturité, liqueur de cassis, grenadine, pointe menthol, mêlée à un doux bois, pain chaud, fumé, épicé.

Attaque franche et opulente – évolution pleine, ne manquant pas de coffre, mais sans vulgarité aucune, au contraire, la colonne est droite et la matière s'enroule, le fruit se donne – très belle tenue – bonne longueur – finale sévère mais pas séchante, franche et encore bien boisée. Vin cylindrique et ramassé d'amont en aval – beau potentiel, grande classe.

A attendre, amateur de vin jeune s'abstenir.

FABIAN BARNET

IN VINO VERITAS n°85 - MARS 2002.jpg

Chateau Canon-la-Gaffeliere
Saint-Emilion Grand Cru

Менее чем за шесть лет Стефан фон Нейпберг вернул этому великоленному замку тот статус, который Canon-la-Gaffeliere имел в 1950-е годы. Для этого но-

Merlot – 55%, каберне-фран – 40%, каберне-совиньон – 5%.

В среднем производится 65 000 бутылок в год.

| | |
|--------------------------------|-----|
| Saint-Emilion Grand Cru 2000 | 9 |
| Saint-Emilion Grand Cru 1999 | 8 |
| Saint-Emilion Grand Cru 1998 | 8 |
| Saint-Emilion Grand Cru 1997 | 8,5 |
| Saint-Emilion Grand Cru 1996 | 8,5 |
| Saint-Emilion n Grand Cru 1995 | 8,5 |
| Saint-Emilion Grand Cru 1994 | 8,5 |
| Saint-Emilion Grand Cru 1993 | 8 |
| Saint-Emilion Grand Cru 1990 | 8,5 |
| Saint-Emilion Grand Cru 1988 | 8 |

1-5, 36-38

13, 15, 19

4, 10, 16

вому владельцу понадобилось привлечь весь арсенал современной энологии и значительные финансовые ресурсы. Мало какой виноградник в Бордо подвергается столь тщательному и столь же бескомпромиссному уходу. Жертва объема, приносимая ради качества продукта, объясняет ту вкусовую и ароматическую концентрацию вина, которую все отмечают как неоспоримое достоинство Canon-la-Gaffeliere. Теплая почва подножия холмов идеально подходит для сорта каберне-фран, который придает вину тонкость танинной структуры. Во многих случаях это вино уже превзошло уровень первых Cru Classe Сент-Эмильона. Руководящий винификацией последних миллезимов энолог Стефан Деренонкур сейчас экспериментирует с выдержкой вина в дубовых бочках на осадке, что должно сделать вкус вина еще более полным.

Вина: все урожай после 1988-го имеют высшее качество.

MAESTRO DEGUSTATOR - NOV. 2003.jpg

| | | | | |
|------|---------------------|-------------|-----------|---------|
| 1999 | CANON LA GAFFELIERE | ST. EMILION | (\$48.00) | (91-93) |
| 1998 | CANON LA GAFFELIERE | ST. EMILION | (\$60.00) | 93 |

Since 1988, this has been one of St.-Emilion's star performers, thanks to the tremendous efforts of the Comte de Neipperg.

1998: This saturated purple-colored 1998 offers sumptuous aromas of prunes, blueberries, overripe black cherries, chocolate, coffee, and spicy new oak. Full-bodied, opulent, and expressive, this flamboyant/ostentatious effort is crammed with glycerin and extract. The tannin is sweet in this accessible, multilayered 1998. Anticipated maturity: 2004-2022.

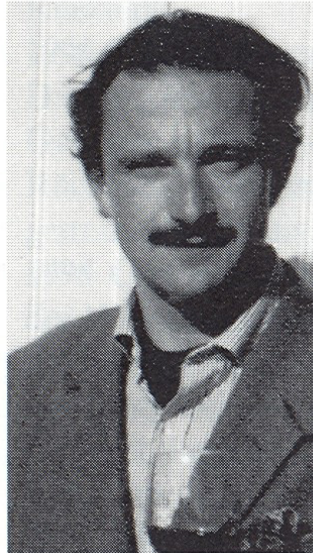
1999: Another terrific effort, this opaque blue/purple-colored 1999 offers notes of melted asphalt, espresso, chocolate, blackberries, prunes, Asian spices, and new oak. Sexy, with slightly less complexity than the 1998, but lower acidity, and a plumper, fatter, more hedonistic style, it can be drunk upon its release and over the following 14-15 years.

TWA n°134 - 23.04.2001.jpg

CHÂTEAU CANON -LA-GAFFELIÈRE *(*)**

Très expressif au nez, sur des parfums de myrtille, de vanille et de réglisse, c'est un vin très rectiligne en bouche, avec une attaque franche, un milieu de bouche de bonne structure tannique très civilisée et une finale en tonalité parfaite. Une grande persistance en haut de palais signe son caractère racé.

1998 Canon-la-Gaffelière: Extrem tiefe Farbe, Violett-Schwarz. In der Nase sehr verschlossenes, aber kompaktes Bouquet, Rauchtöne, schöner, reifer Ausdruck von würzigem, aber auch fruchtbringendem Cabernet Franc, sanft hölzern durch den Einsatz der neuen Holzcuviers, die Tiefgründigkeit des



Weines überwiegt. Im Gaumen extrem saftig, feinstgliedrige, fast schon gebundene Tannintextur, völlig harmonisch und elegant, langes Rückaroma. Einer der allerfeinsten und zugleich grössten Weine, die **Stephan von Neipperg** je gemacht hat; den nachdegustierten 97er Canon-la-Gaffelière haben wir gleichzeitig von 18 auf ebenfalls 19 Punkte aufgewertet. *19/20 2003 – 2013*

WEINWISSER Nr. 4-1999.jpg

| THE TOP 100 | | |
|-------------|--|-----------|
| 2001 | | |
| 1 | ITALY Tenuta dell'Ornellaia Bolgheri Superiore Ornellaia 1998 (\$110) | 96 |
| 2 | FRANCE Château Cheval-Blanc St.-Emilion 1998 (\$190) | 98 |
| 3 | CALIFORNIA Viader Napa Valley 1998 (\$65) | 95 |
| 4 | ITALY Avignonesi Vino Nobile di Montepulciano Grandi Annate Riserva 1997 (\$40) | 96 |
| 5 | FRANCE Château Canon-La Gaffelière St.-Emilion 1998 (\$52) | 95 |
| 6 | ITALY Antinori Bolgheri Superiore Guado al Tasso 1998 (\$65) | 95 |
| 7 | ITALY Pio Cesare Barolo 1997 (\$58) | 95 |
| 8 | FRANCE Alain Graillot Crozes-Hermitage 1999 (\$19) | 93 |
| 9 | FRANCE Château Smith-Haut-Lafitte Pessac-Léognan 1998 (\$36) | 94 |
| 10 | FRANCE E. Guigal Côte-Rôtie Brune et Blonde 1998 (\$38) | 93 |

JAMES SUCKLING'S TOP-SCORING 1998 BORDEAUX

For complete reviews, see the Buying Guide "New Releases" section starting on page 121, or our Web site at www.winespectator.com. An alphabetical listing of all wines tasted for this report begins on page 136 of this issue's Buying Guide.

| WINE | SCORE | PRICE | WINE | SCORE | PRICE |
|---|-------|-------|---|-------|-------|
| CHÂTEAU LE PIN Pomerol 1998 Rich, wild and exotic. Dark ruby color, with decadent aromas of aged game, wild fruits and grilled meat. Full-bodied, with big, velvety tannins. Goes on and on. | 100 | \$615 | CHÂTEAU LA MISSION-HAUT-BRION Pessac-Léognan 1998 Tight and muscular. Very floral on the nose, with gorgeous berry and cherry. Full-bodied, with silky tannins and a long, fresh and fruity finish. | 95 | \$108 |
| CHÂTEAU CHEVAL-BLANC St-Emilion 1998 Subtle, complex and refined, with aromas of cherry, licorice, mineral, berry and other sweet, ripe fruit. Full-bodied, compacted, with fine, silky tannins. Long finish. | 98 | \$190 | VIEUX-CHÂTEAU-CERTAN Pomerol 1998 Powerful and wonderfully toned. Lovely mineral, berry and violet aromas with hints of new oak. Full-bodied, with big yet silky tannins and a long finish. | 95 | \$152 |
| CHÂTEAU L'EVANGILE Pomerol 1998 Captivating aromas of wild raspberry, cherry, mineral and grilled meat. Full-bodied, with huge, silky tannins, a long, caressing finish. Wonderful proportions. | 98 | \$143 | CHÂTEAU AUSONE St-Emilion 1998 Plenty of mineral and berry character with hints of smoke. Full-bodied, with big, chewy tannins and a long, long finish. Massive. | 94 | \$200 |
| CHÂTEAU PÉTRUS Pomerol 1998 High-toned nose, with violet, floral, berry and toasted oak character. Full-bodied, with an incredible backbone of super-polished tannins. Satisfying finish. | 98 | \$550 | CLOS DE L'ORATOIRE St-Emilion 1998 Blackbuster. Black in color, with strong grape, toasted oak and dark chocolate aromas. Full-bodied, with big, velvety tannins and a long finish. | 94 | \$37 |
| CHÂTEAU HAUT-BRION Pessac-Léognan 1998 Classy and rich, with vanilla, raspberry and chocolate aromas. Full-bodied, with fine tannins and a long aftertaste of berry, grape and vanilla. Elegant and powerful. | 97 | \$193 | CHÂTEAU LA FLEUR DE GAY Pomerol 1998 Exotic aromas of spice, meat and game, with lots of ripe berry. Full-bodied, with soft, ripe tannins, a long finish. On the level of the stupendous '90. | 94 | \$86 |
| CHÂTEAU L'ÉGLISE CLINET Pomerol 1998 Rich and thick, yet refined and precise. Crushed raspberry and berry character. Full-bodied, with loads of fruit, fine tannins and an extremely long finish. | 96 | \$197 | CHÂTEAU LA FLEUR-PÉTRUS Pomerol 1998 Big wine, classic in style, with loads of berry and Indian spices, hints of mineral and flowers. Full-bodied, with full tannins and lots of fruit. | 94 | \$77 |
| CHÂTEAU LAFLEUR Pomerol 1998 Fascinating aromas of berry, chocolate, smoke and dried herb. Full-bodied, with incredibly well-integrated tannins, a fine texture and a finish that lasts for minutes. | 96 | \$200 | CHÂTEAU LATOUR À POMEROL Pomerol 1998 Tar, berry and dry stone aromas, with wet earth. Full-bodied, thick and chewy, with velvety tannins. Big and rustic. Textbook Latour à Pomerol. | 94 | \$81 |
| CHÂTEAU LA MONDOTTE St-Emilion 1998 Extremely well-constructed. Black in color, massively grapey, with mineral, menthol and toasted oak. Full-bodied, with big, velvety tannins and a long, grapey finish. | 96 | \$332 | CHÂTEAU ROL VALENTIN St-Emilion 1998 Breathtaking. Very dark color. Loads of cinnamon, berry and currant aromas. Full-bodied, with big, velvety tannins and a lengthy finish. Well-crafted. | 94 | \$77 |
| CHÂTEAU TROTANQY Pomerol 1998 Subtle and harmonious, with berry, tobacco and vanilla character. Full-bodied, with masses of polished, fine tannins. Long finish of milk chocolate and berry. | 96 | \$207 | CHÂTEAU SMITH-HAUT-LAFITTE Pessac-Léognan 1998 Intense aromas of wet earth, stone and berries. Full-bodied, with super well-integrated tannins and long finish. Well made. | 94 | \$36 |
| CHÂTEAU CANON-LA GAFFELIÈRE St-Emilion 1998 Wonderful aromas of ripe fruit, Indian spices and mineral. Full-bodied, with fine tannins and a plush, caressing structure. Fine and fabulous. | 95 | \$52 | CHÂTEAU DE VALANDRAUD St-Emilion 1998 Exotic, a bit rough now, but quite likable. Intense aromas of tobacco, mineral, cedar, ripe fruit. Lots of toasted oak. Full-bodied, with big tannins, lots of fruit, a chewy finish. | 94 | \$284 |

WINE SPECTATOR - JANV. 31, 2001.jpg

JAMES SUCKLING

A Right Bank Year to Rediscover

I am always on the look out for quality 1998 Bordeaux. I love their rich, opulent character, their round tannins and long, decadent finishes. It is one of my favorite recent vintages from France's premier wine region.

If you are scratching your head, you have forgotten that 1998 was a split vintage for Bordeaux. I rated it at 95 points for the Right Bank regions of St-Emilion and Pomerol. Pessac-Léognan also excelled. (I gave the Left Bank just 88 points).

I remember writing in early 2001 following an extensive tasting of the 1998 wines in bottle that "If Bordeaux were only the regions of Pomerol and St-Emilion, then the 1998 vintage would be one of the greatest ever.... They have everything from ultraripe, exotic fruit aromas and flavors to copious, opulent tannins. They are classic wines for long-term aging."

This is still true. I tasted more than 100 1998s in blind tastings in Bordeaux late last year, and the wines showed as they did from the beginning, or even better. I gave 16 wines scores of 95 points or more; 15 of these were Right Bank wines. The top performers were Le Pin (100 points) and Pétrus (99). Overall, I rated four dozen St-Emilions and Pomerols 90 points or more. (An alphabetical list of all the wines tasted for this report is available at www.winespectator.com/063009.)

Other top-rated wines in the tasting included La Mondotte (98), Cheval-Blanc (98), L'Église Clinet (97), Trotanoy (97), Haut-Brion (97), L'Évangile (97), La Mission-Haut-Brion (96), Pape Clément White (96) and Haut-Brion White (96).

I scored only one Médoc wine 95 points—first-growth Lafite Rothschild—and only a handful of other Left Bank wines were outstanding in my tasting.

It all makes sense. The 1998 vintage was hot and sunny for most of the growing season. But in late September, rain began. I still remember the headline on an Oct. 4, 1998, story in Bordeaux's daily newspaper *Sud Ouest*: it read "Take Cover! Too Much Water in the Grapes."

Wine estates in such areas as St-Emilion, Pomerol and Pessac-Léognan finished harvesting their grapes by Sept. 29. Right Bank wines are made with earlier-ripening varieties such as Merlot and Cabernet Franc. So, they made excellent vintages in 1998.

The difference in picking can be as much as two weeks between the Merlot of the Right Bank and the Cabernet Sauvignon of the northern Médoc. So essentially, the more Cabernet Sauvignon a wine estate had in its vineyard, the more diluted or unripe the final bottles could be in 1998. Most producers in regions such as Margaux, St-Julien, Fautailac and St-Estephe had to harvest in between rain showers. This is why many of the Left Bank 1998s are slightly diluted, hollow or unripe.

But, boys, are the outstanding reds beautiful. The St-Emilions and Pomerols are classic clarets, with all the structure and richness one could hope for. Right Bank winners and wine collectors have often compared the 1998 to the legendary 1950—another year when Left Bank estates failed but Right ones triumphed—and I think they are correct.

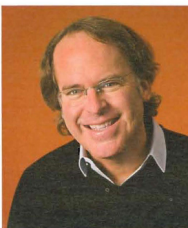
Moreover, many of the 1998s are excellent values, selling for less than their counterparts in more famous vintages such as 2000 or 2005. For example, the classic-quality 1998 L'Église Clinet averaged \$190 a bottle at auctions in the fourth quarter of 2008; a bottle of the 2000 traded for \$275.

The 2005 was initially released at \$382 in late 2008 for between \$40 and \$75 a bottle, and they are fantastic buys. Examples include Canon-La Gaffelière (94, \$73), Faugères (93, \$41), Clos de l'Oratoire (92, \$57) and Le Bon-Pasteur (93, \$42).

The best 1998s will age well for decades to come. In fact, most of them still need another two or three years of bottle age to become truly attractive to drink. I would recommend waiting until 2011 or 2012 to try them, although you could enjoy them sooner if you decant them a couple of hours before serving. (Wines that score in the low 90s or below, however, should be consumed over the next few years.)

With 1998 in mind, it's good not to follow the pack on Bordeaux vintages. And if you love Right Bank wines, rediscover a 1998 Pomerol or St-Emilion and see for yourself.

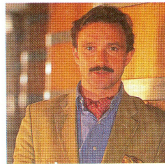
European bureau chief James Suckling is Wine Spectator's lead taster on the wines of Bordeaux.



IF BORDEAUX WERE ONLY POMEROL AND ST-EMILION, THE 1998 VINTAGE WOULD BE ONE OF THE GREATEST EVER.

WINE SPECTATOR.COM
For an alphabetical list of all wines tasted for this retrospective, visit www.winespectator.com/063009. Wine Spectator.com members can also view full tasting notes for the wines.

WINE SPECTATOR - JUNE 30, 2009.jpg



Stephan von Neipperg

5

**CHÂTEAU CANON-
LA GAFFELIÈRE**

St. Emilion 1998 • 95 / \$52
BORDEAUX

Purchased by the von Neipperg family in 1971, this St. Emilion grand cru classé has excelled in the last decade under the direction of Stephan von Neipperg. Located just south of the town of St. Emilion, its vineyards are planted to Merlot (55 percent), Cabernet Franc (40 percent) and Cabernet Sauvignon. From a three-time Top 100 winery, the '98 equals the classic 1990 and 1995 vintages made by this estate. 4,580 cases made.

WINE SPECTATOR • DEC. 31, 2001 - JAN. 15, 2002

WINE SPECTATOR 2 - DEC. 31, 2001 - JAN. 15, 2002.jpg

5 95 **Château Canon-La Gaffelière** **St.-Emilion**
1998 \$52 Wonderful aromas of ripe fruit, Indian spices and mineral. Full-bodied, with fine tannins and a plush structure that caresses every inch of the palate. Really fine and fabulous. Best ever from this estate. Best after 2010. 4,580 cases made.—J.S. (1/31/01)

WINE SPECTATOR 3 - DEC. 31, 2001 - JAN. 15, 2002.jpg

五莊聯盟的聯想

劉致新



今年試波蘭多新酒最後一天的中午，參加了波蘭多列級酒莊聯合 (UGCB) 的午餐，同席的有「開伯道」酒莊的經理卓度 (J. D. Videau) 和龐特卡納酒莊 (Poniet Cane) 當家的侄女美琳娜·德薩摩 (Melina Tesseron)。

我們坐在放酒的地方旁邊，當然近水樓台，第一時間便拿了 Branaire Ducru 和 Poniet Cane 各一瓶，坐下想聽他們關於五莊聯盟 (Les 5) 的成員，馬上又拿了 Smith Haut Lafitte、Canon-la-Gaffeliere 和 Gazin。

午餐飲過這五種酒，也非常愜意的，在那靜聲靜語，大家守著，只能吃魚，但配上紅酒汁，配紅酒也最佳。

我和五莊相當有緣，九十年代中還未開始寫酒，便喜歡飲 1990 的 Gazin，覺得是非常好的年份。第一年到波蘭多試新酒，第一晚住的就是 Smith Haut Lafitte。那一年我試過發現了 1996 的 Poniet Cane，買入滿花，我仍在享受那些來價一百多港元的好酒，我加入 Gontemp 也是在該莊。我住在 Branaire Ducru，他們非常熱情，安排我試 1999 到最新年份的酒，又住過 Canon La Gaffeliere，我認爲他的酒不再升一級是不合理的 (可能他沒有申請吧，要問問他了，不過暫時又無分別)。

我沒有在午餐上講我和五莊的因緣，但飲他們的酒想起五莊最近二十年的變化，卻不由得浮想連篇。

二十年來，五莊變化最少的可算「加山」(Gazin)。這家在龐馬可的大酒莊，不論家機或釀工人都沒有改變，而且釀酒風格基本沒變，是仍然經典的波蘭多右岸酒。

至於其他四家酒莊，都在八十年代末或九十年代初出現了相當大的變化。例如，1988 年 Branaire Ducru 易手，1990 Smith Haut Lafitte 易手，1987 Canon la Gaffeliere 由少主打理，1994 年開始，Poniet Cane 的釀酒風格也明顯現代化。

這四家酒莊在新主管理下，酒的水準都有顯著進步，而且有越來越好的趨勢。如果能舉辦一次試酒會，同時品嚐五家酒莊八十年代中期 (1985 或 1986)、九十年代中期 (1996 或 98)、二十一世紀初 (2000 或 2005) 這三個時期的酒，然後請五位莊主親臨現場酒莊改革的體會，一定非常有趣。或者我該向他們提出，讓他們來港講一次。

當日試的五莊，來自不同年份，由最新的年份算起吧。

- Poniet Cane 2003 一 很成熟，非常完整，果味澎湃而均衡，極佳年份，暫可趁新鮮飲用，但果味應呼喚一小時。
- Gazin 2001 一 很強的礦物氣息，花香成熟，明顯較涼氣候，結構堅強，果味已，已相當成熟。
- Smith Haut Lafitte 2000 一 灌裝前沒有過濾，果香成熟迷人，口感豐滿而滑，非常均衡，悠長。
- Canon la Gaffeliere 1998 一 也有明顯礦物氣息，結構強，果味甚成熟，仍可釀年。
- Branaire Ducru 1998 一 有緣，正在變質，變厚變勁，果香辛辣，也許明年會再醇熟，暫時不要飲 98 了。

WINENOW MONTHLY n° 110 - MAY 2007.jpg

圣艾美浓 2005 & 2000 年份 品酒与晚宴

SAINT-EMILION TASTING - 2005 & 2000 VINTAGES AND EXCLUSIVE DINNER IN SINGAPORE ON 20 MAY 2006

10家酒庄的业主/代表

- Chateau Canon La Gaffeliere
Clos de l'Oratoire
Stephan VON NEIFFERG
- Chateau Dessenault
Limonze BRUN
- Chateau Foveoque
Alain MOUEIX
- Chateau Franc-Mayne
Herve & Grise LAVALE
- Chateau Foyfeyade
Jocel FALOUS
- Chateau Gaudet-Saint-Julien
Guy-Pierre UGNAC
- Chateau Larmorade
Clive THOMAS-CHENARD
- Chateau La Tour Figeac
Olivier RETTENMAYER
- Chateau Moulin du Cadet
Pierre BUDS

2006年5月20日，10家圣艾美浓酒庄特为葡萄酒业界的专才举办美妙的2005与2000年份品酒会，出席者包括酒师、餐館業者、酒店經營者、餐飲主管、葡萄酒分銷公司、酒吧與葡萄酒專業酒業主與職員、飛行人員與媒體人。

我們的中文版 (波爾多葡萄酒概覽) 協辦該品酒會 (并舉辦晚宴)：蕭英雲，座無虛席。

10家酒庄的业主/代表亲自招呼来宾品酒，大家互动愉快。

顶尖庄位聯誼
2006年5月20日的同一晚，一場特為新加坡規模最大的葡萄酒俱樂部 - Just Wine Club (由著名的連鎖超級市場職工平價合作社創設) 舉辦的盛大晚宴，雲集了10家酒庄的業主、代表以及眾多嘉賓。

當晚的貴賓計有平價合作社的高級顧問兼員工部主席 Mr Chandra DAS；新加坡報業控股董事兼執行總裁馮沃麟 Mr Alan CHAN；以及職工平價合作社集團總裁陳建狀 Mr TAN Kian Chew。■

112 波蘭多葡萄酒概覽 | 2007 | 2008

